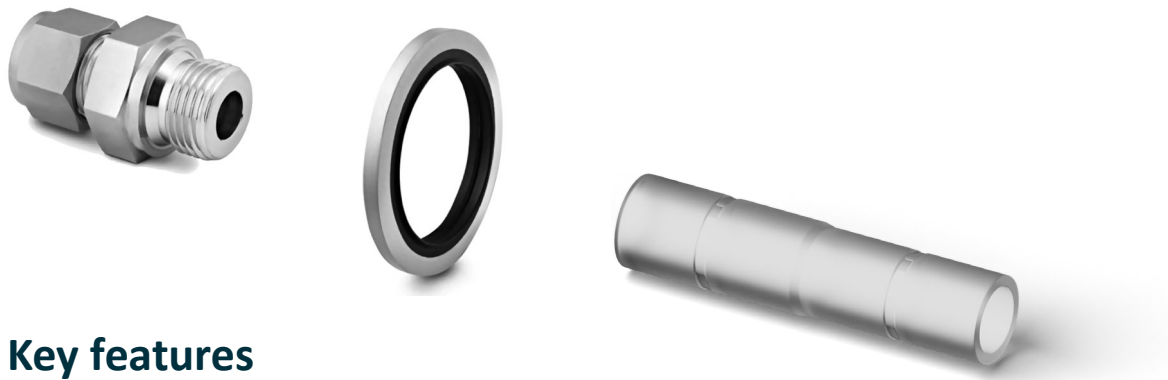


Fitting Kit






for AEM Electrolyser EL 4.0/4.1



Key features

- ≡ Adapters for imperial stainless steel piping
- ≡ Plastic adapters for the water line(s)
- ≡ Fittings suitable to easily interconnect the EL 4.0/4.1 through standard pipes to the balance of system

Specifications

KIT	Item	Quantity	Description	Supplier	Supplier code	Size	Used
Imperial Assembly Kit 4.0/4.1	 SS316 Tube fitting ¼"	2	Stainless Steel 316 tube fitting Male ISO Parallel Thread Straight Shoulder	Swagelok	SS-400-1-4RS	G ¼"	H ₂ vent and H ₂ out
	 SS316 Gasket ¼"	2	Stainless Steel 316 gasket Body Material: Stainless Steel 316 Inner ring: FKM	Swagelok	SS-4-RS-2V	G ¼"	H ₂ vent and H ₂ out
	 SS316 Tube fitting ⅜"	1	Stainless Steel 316 tube fitting Male ISO Parallel Thread Straight Shoulder	Swagelok	SS-600-1-6RS	G ⅜"	O ₂ vent
	 SS316 Gasket ⅜"	1	Stainless Steel 316 gasket Body Material: Stainless Steel 316 Inner ring: FKM	Swagelok	SS-6-RS-2V	G ⅜"	O ₂ vent
	 Adapter 10 mm – ⅜"	3	Polipropilene adapter	Enapter		10 mm – ⅜"	H ₂ O In Cooling In/Out

Note: This kit may not include all the items required for complete integration into your project. It only provides the fittings for one AEM EL4.0/EL 4.1 electrolyser. Additionally, items such as valves and pipes should be installed by the integrator according to the specific design.